



Illustrating Excellence: A Showcase of the Maritime
Services We Provide at NAVALISTA

NAVALISTA





Our offices

EMEA (Europe, Middle East and Africa) Region:

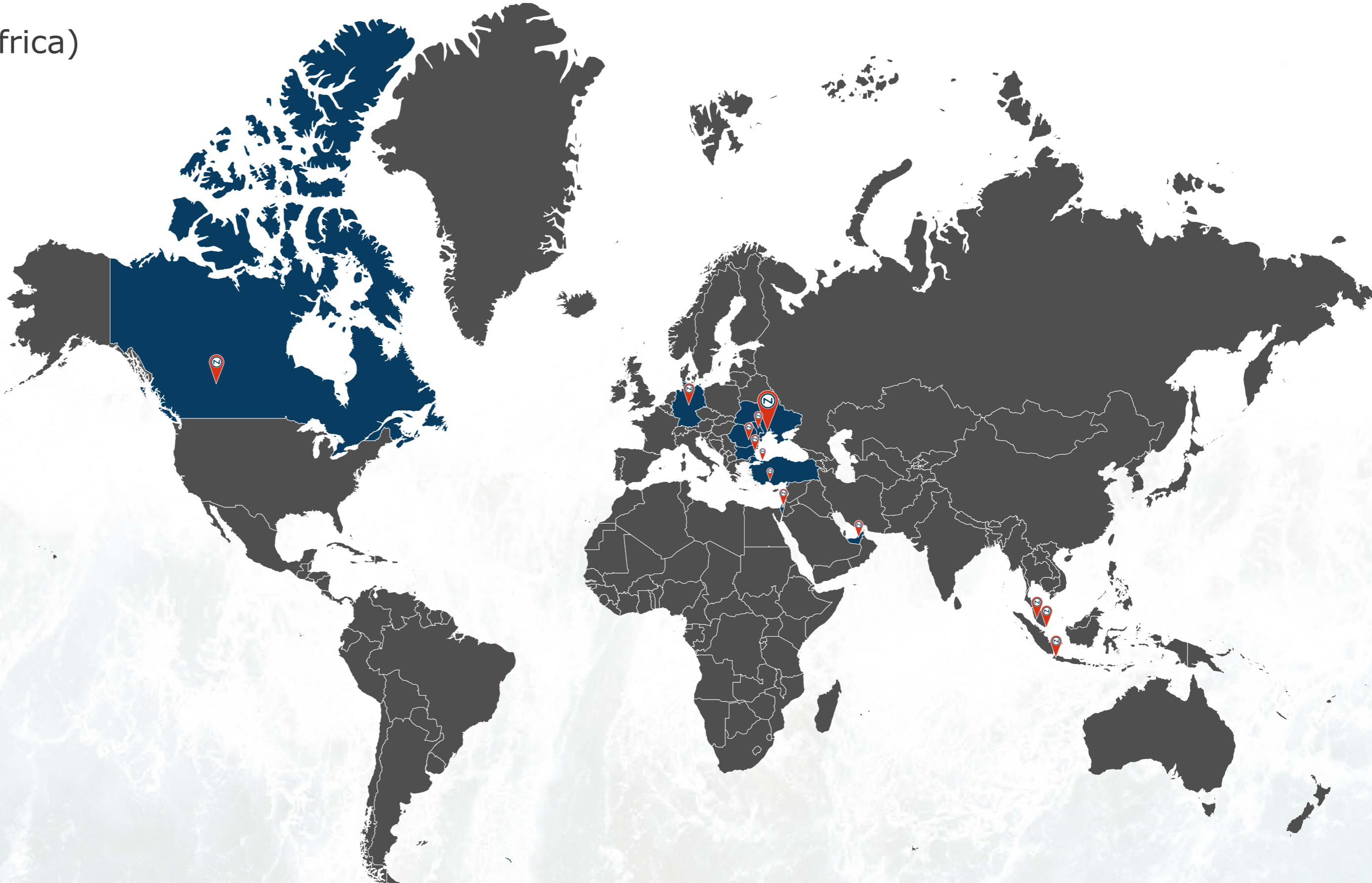
- Ukraine, Odessa - Head office
- Galati, Romania
- Burgas, Bulgaria
- Valencia, Spain
- Hamburg, Germany
- Istanbul/Antalya, Turkey
- Chisinau, Republic of Moldova

NA (North America) Region:

- Edmonton, Canada
- Miami, USA

APAC (Asia Pacific) Region:

- Haifa, Israel
- Singapore
- Malaysia
- Indonesia





Ship Design



Class (Technical) and Detailed Design for new construction and existing seagoing and inland navigation vessels.

BWTS Installation Design



Ballast Water Treatment System Design and Installation According to IMO's "International Convention for the Control and Management of Ship's Ballast Water and Sediments".

Towage and Passage



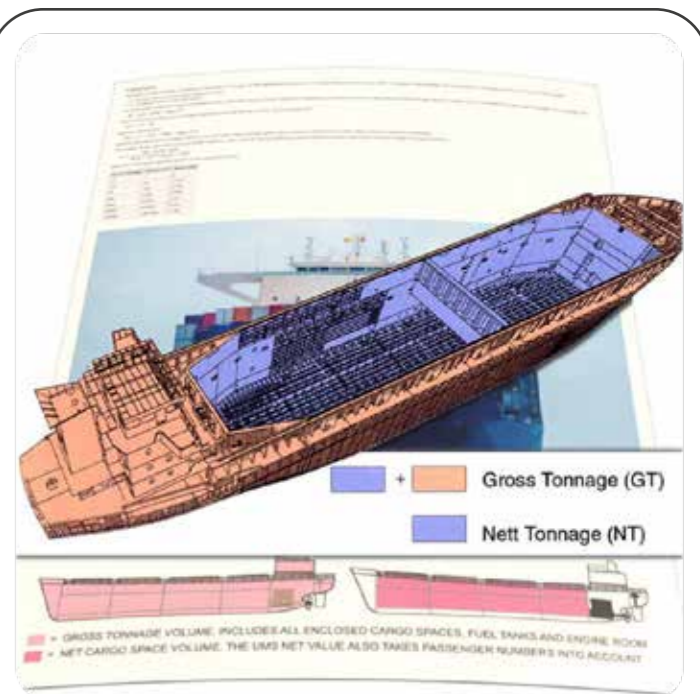
Passage and Single Voyage Plans development.

Ship Technical Booklets



Operational and Technical Booklets, e.g. Trim and Stability Booklets, SOPEP, Strength calculations, FEM (Finite Elements Method) analysis, etc.

Tonnage Calculations



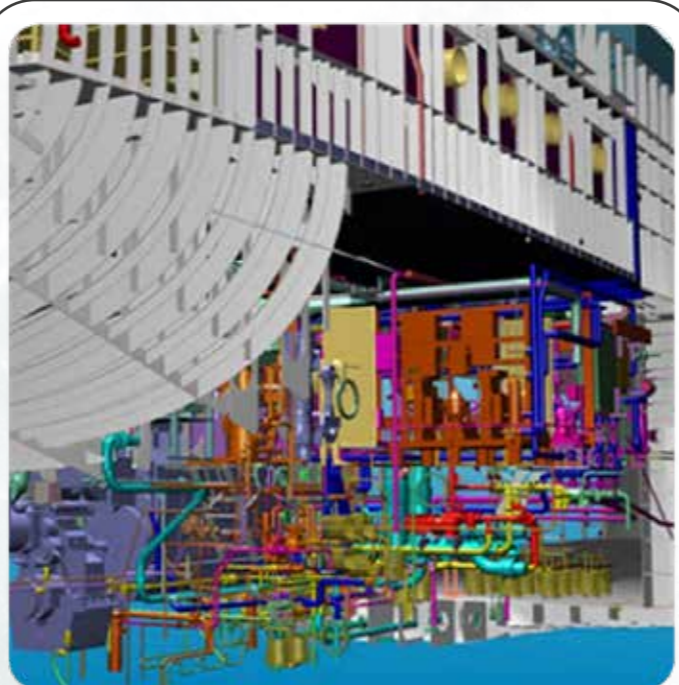
Tonnage calculations according to requirements of the International Tonnage Convention 1969, Convention on the measurement of inland navigation vessels 1966, other Classification Societies Rules.

Heavy Lift Oversized Cargo



Development of the Stowage Plans, Sequences of Loading Plans, Reinforcement Plans, Stability & Strength calculations of vessel during HLOCT operations, Strength calculation of fastenings, etc.

System & Machinery



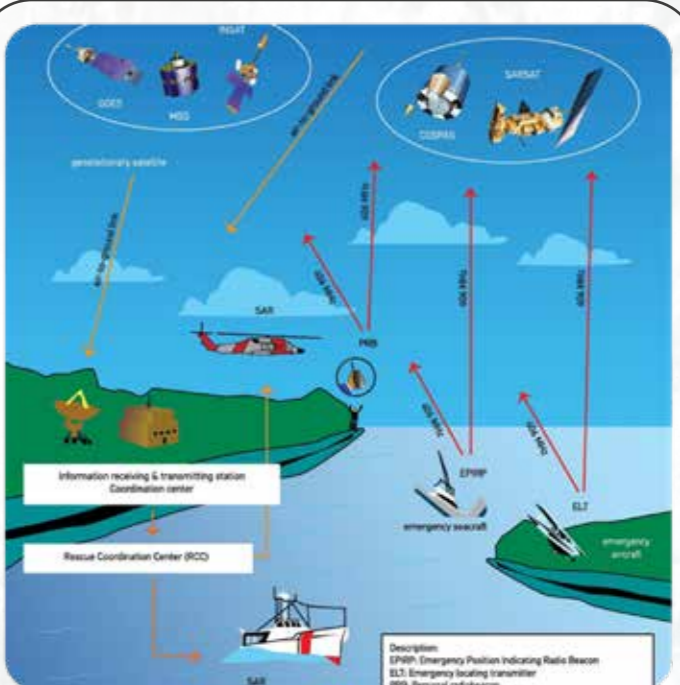
Development of the Main Engine, Auxiliary Engine, piping systems principal diagrams and routes, etc.

3D Scanning Survey



3D Scanning surveys of Ship's Engine Room and internal structures, using LIDAR equipment, 3D modelling based on Point Cloud data.

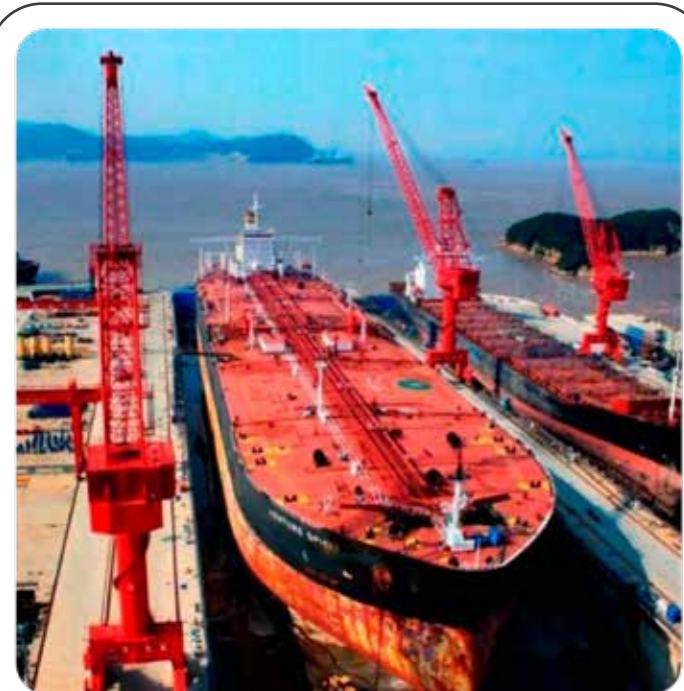
ERS



Emergency Response Service (ERS) provides 24/7 prompt access of oil tankers to computerized, shore-based damage stability and residual structural strength calculation programs.

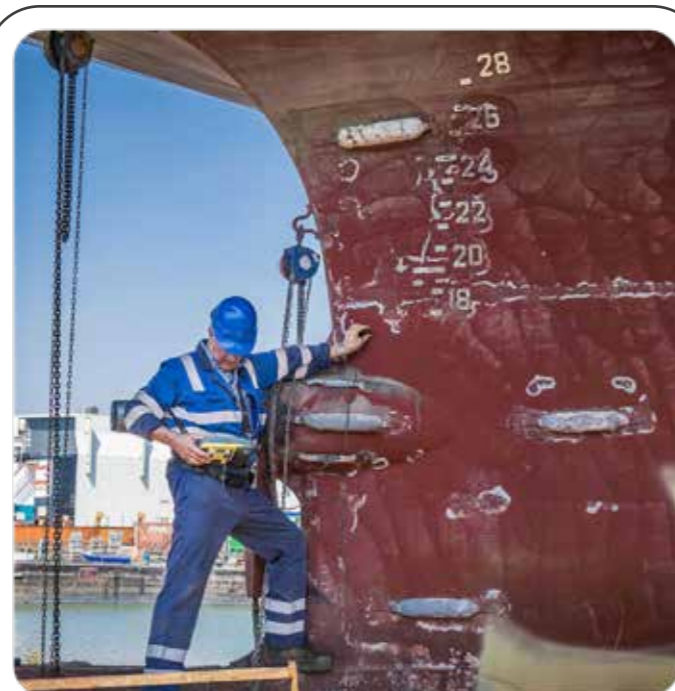


Shipbuilding & Ship repair



Shipbuilding and ship repair services. Shipbuilding is to producing a product named Ship or Vessel etc.

UTM



Ultrasonic Thickness Measurements (UTM) of Hull Structures, Preliminary Repair Surveys, Repair supervision during docking.

IHM



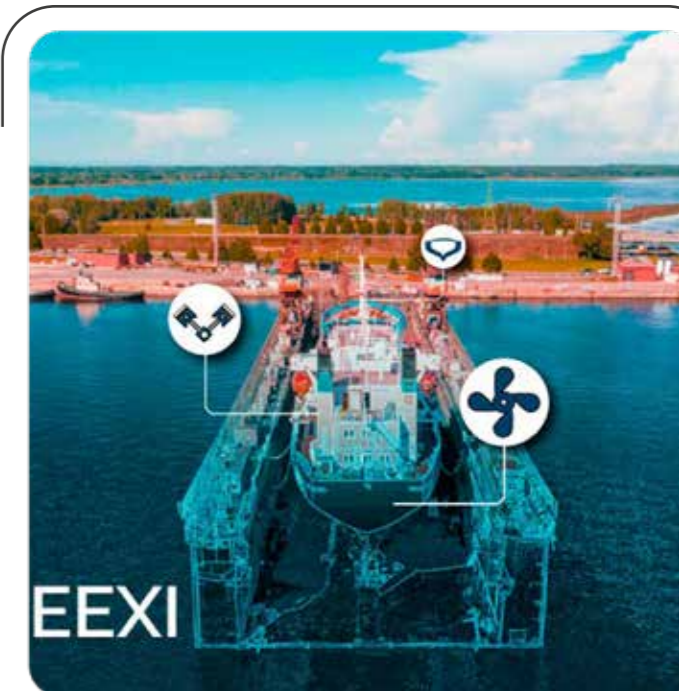
Inventory of Hazardous Materials (IHM) Conventions Obliges Shipowners to Analyze Samples of Various Parts of the Ship for the Presence Hazardous Materials.

Ship's condition related surveys



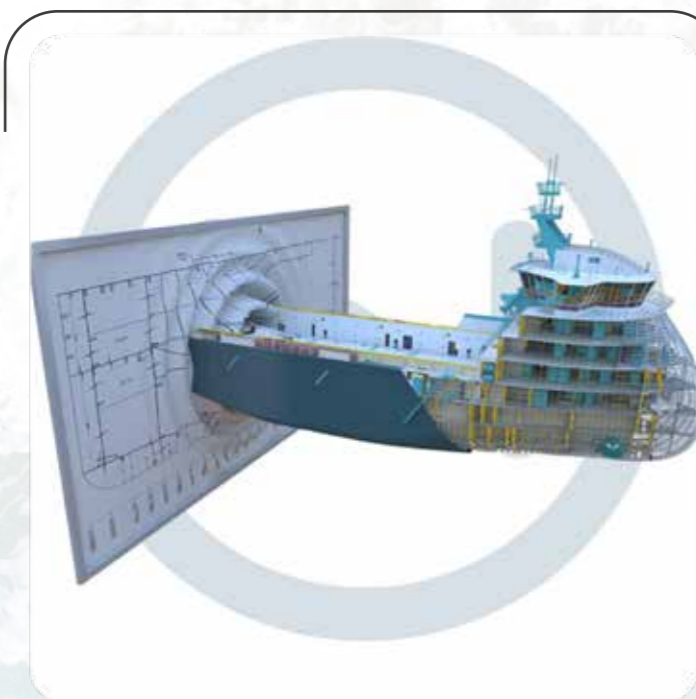
P&I, H&M, pre-purchase, on/off-hire condition and bunker surveys, holds/tanks cleanliness, hatch covers watertightness surveys, etc.

EEXI



Energy Efficiency Existing Ship Index. Calculation of the energy efficiency factor for existing vessels, preparation of a technical file, etc.

Technical advisory & consultancy



Consulting services to determine the optimal solutions for the selection, installation and operation of any ship systems, taking into account market trends and new regulatory changes in the industry.

Ship registration



Fast, high-quality and cost-effective Ship Registration Services: Ownership, Navigation, CSR, Deletion Certificates, Flag Exemptions, Mortgage registration

Legal advisory & consultancy



Handling dry shipping disputes; Managing wet shipping claims arising from marine casualties; Drafting contracts; Negotiating out-of-court settlements; Coordinating ship arrests and conducting maritime arbitrations worldwide.

3D Scanning services



Laser scanning is carried out in order to restore or update the executive documentation, as well as within the framework of the pre-design survey of the reconstruction (repair) object.



Ship design services

- **Consulting**
Setting sail towards success, guiding our clients every step of the way.
- **Conceptual design**
This stage involves creating initial sketches and layouts of the ship based on the Customers requirements.
- **Feasibility study**
This stage involves evaluating the technical and economic feasibility of the proposed design.
- **Basic design**
This stage involves creating detailed drawings and specifications of the ship's structure, propulsion system, and equipment.
- **Class approval**
This stage involves obtaining approval from classification societies such as Lloyd's Register or ABS for the ship's design and construction.
- **Detail Design**
This stage involves creating detailed drawings and specifications for all aspects of the ship, including the hull, deck, and interior.
- **Production drawings and information**
This stage involves creating detailed drawings for use in ship construction, including plans for fabrication and assembly.
- **Supervision of construction**
This stage involves overseeing the construction of the ship to ensure that it is built according to the approved design.

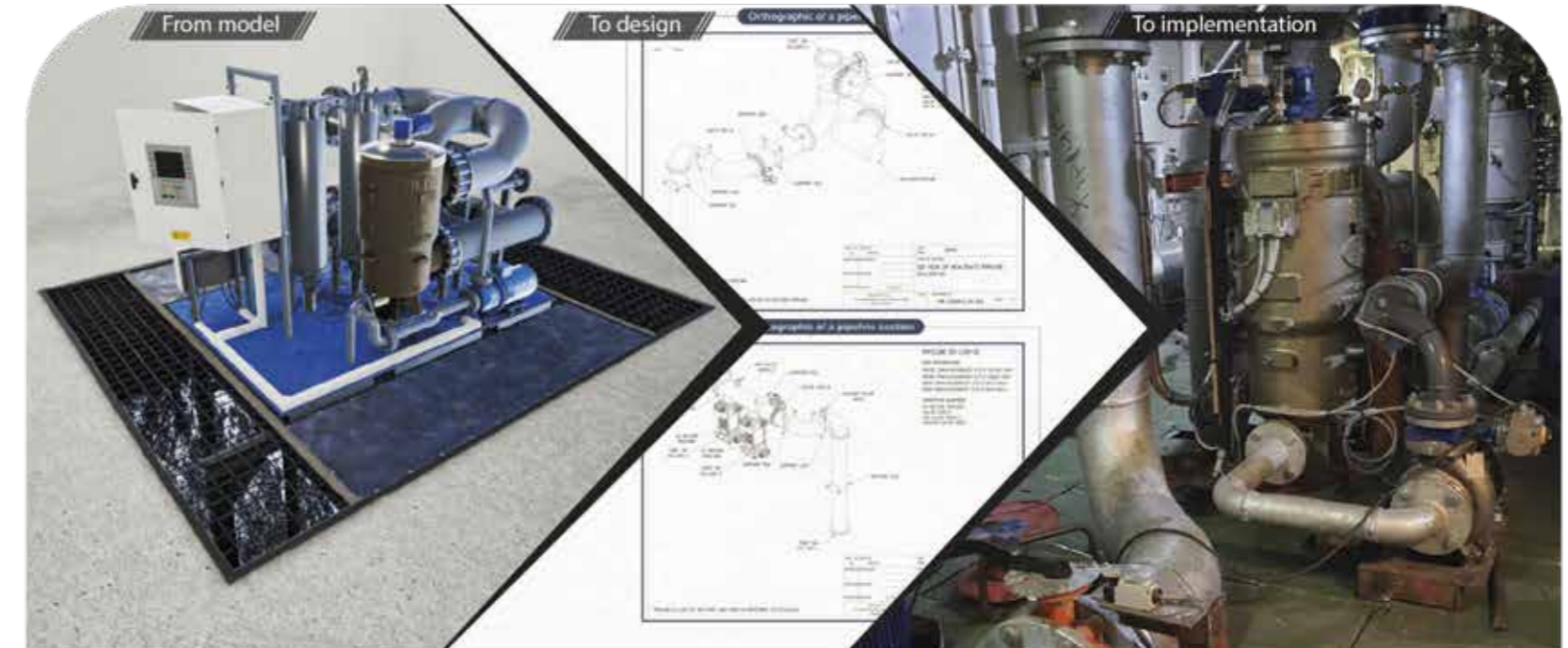
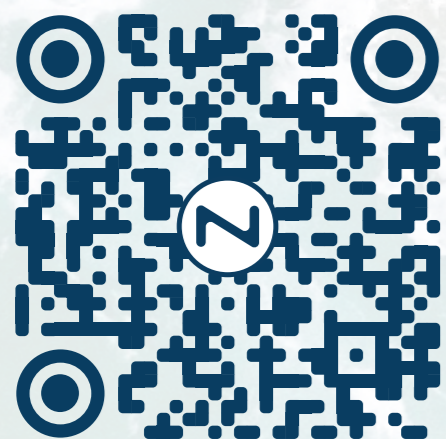




Other services

- BWTS Installation Design
- Towage and Passage development, organisation and coordination
- Calculations and Development of Ship Technical Booklets
- 3D Laser scanning and visualisation
- Shipbuilding and shiprepair organization
- Ultrasonic measurements (UTM)
- Survey and inventory of Hazardous materials
- Ship condition related surveys
- Calculation of ship energy efficient factor
- Technical advisory and consultancy
- Legal advisory and consultancy
- Ship registration

for more information visit our site
www.navalista.com



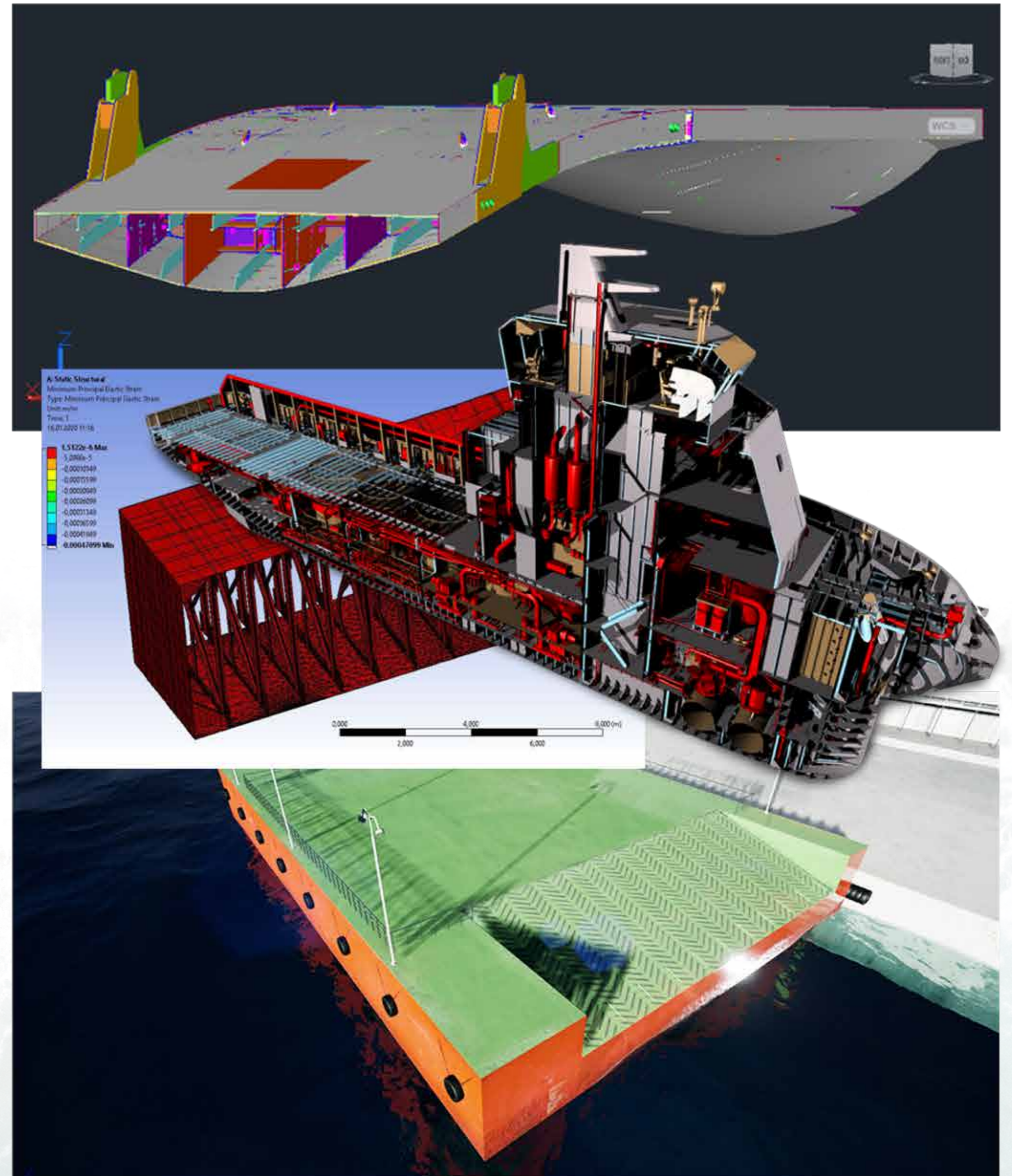
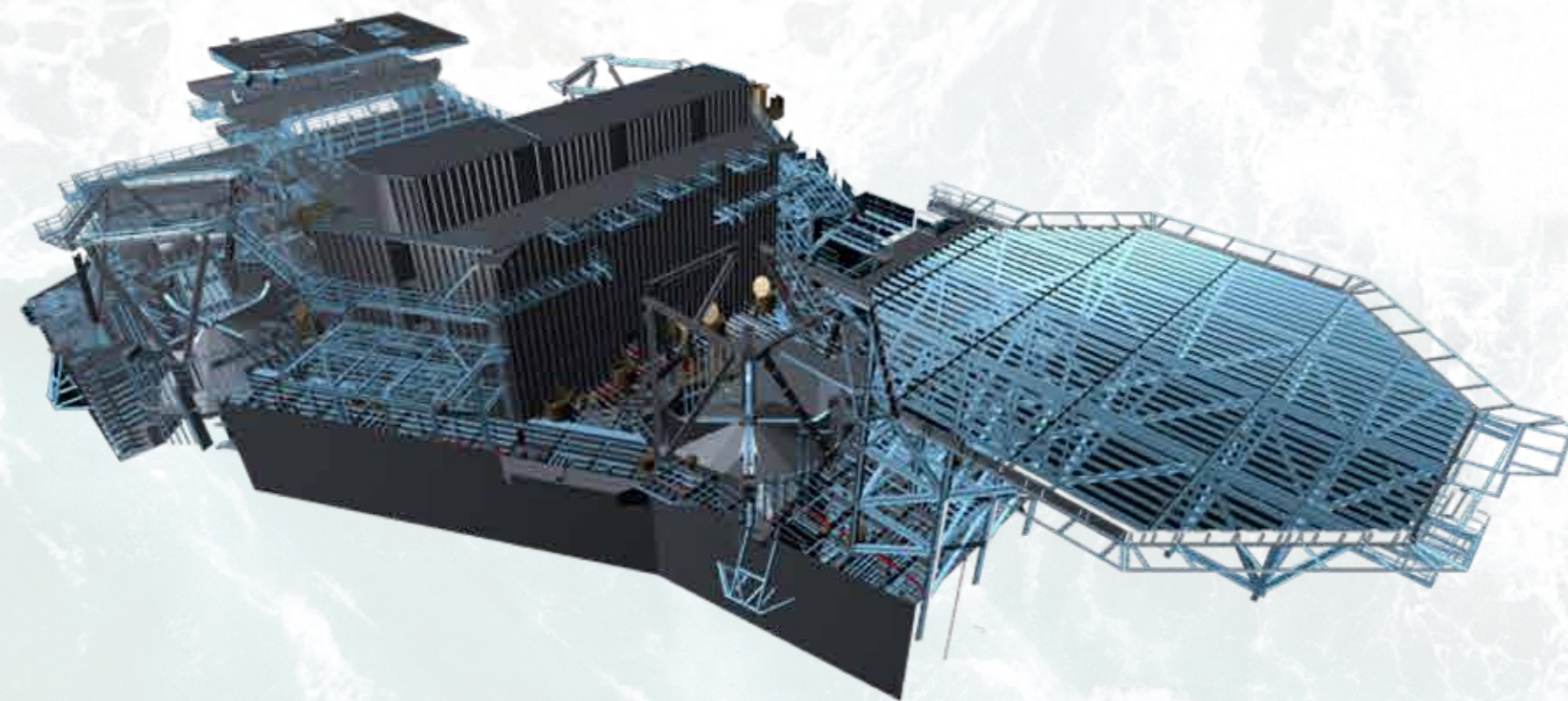




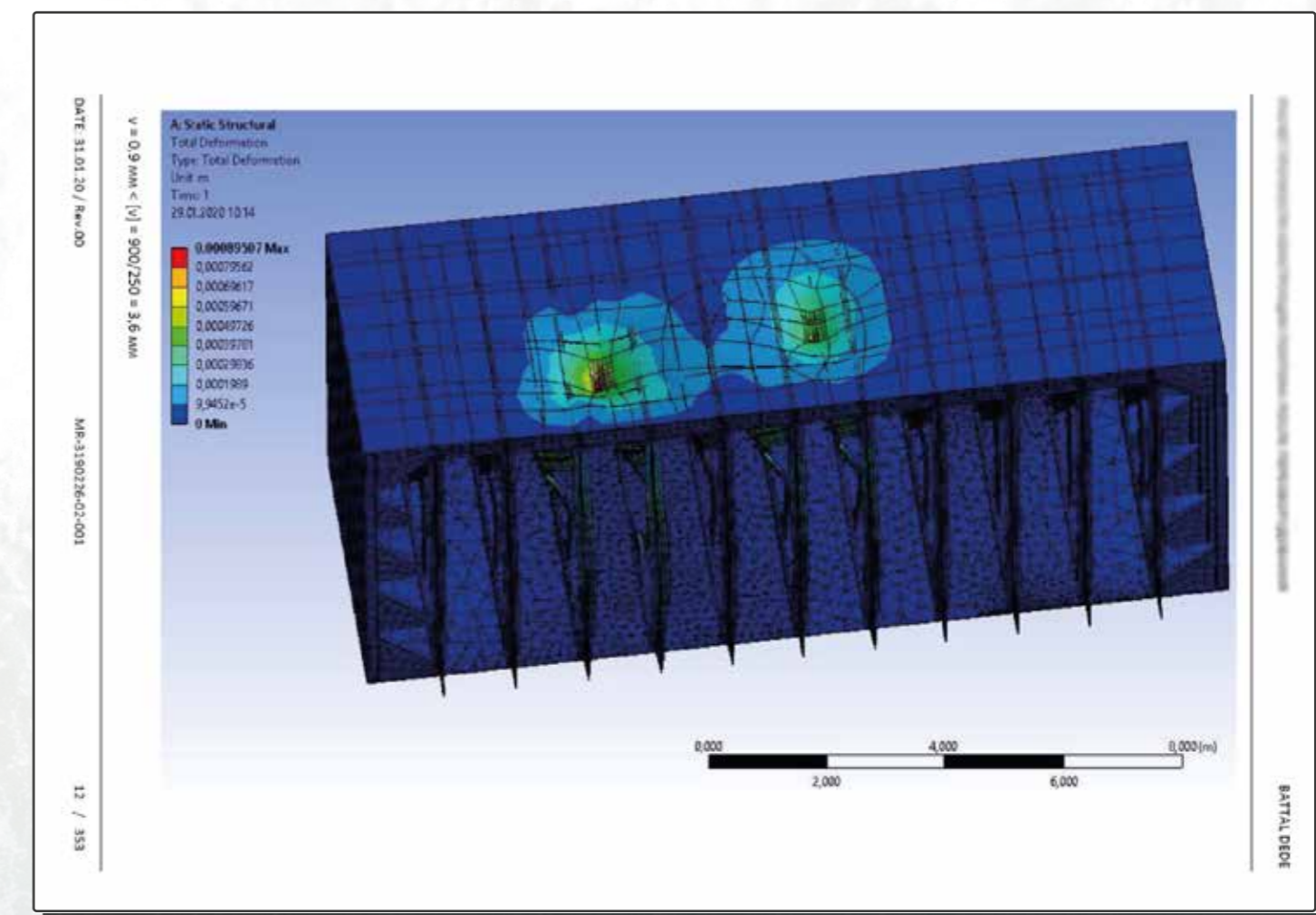
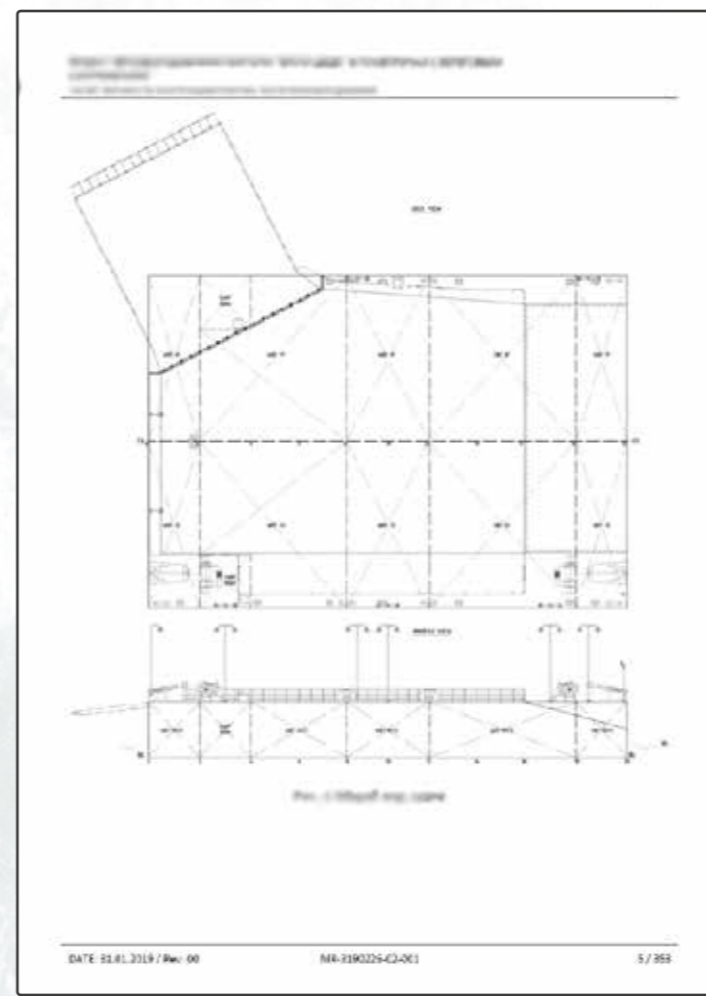
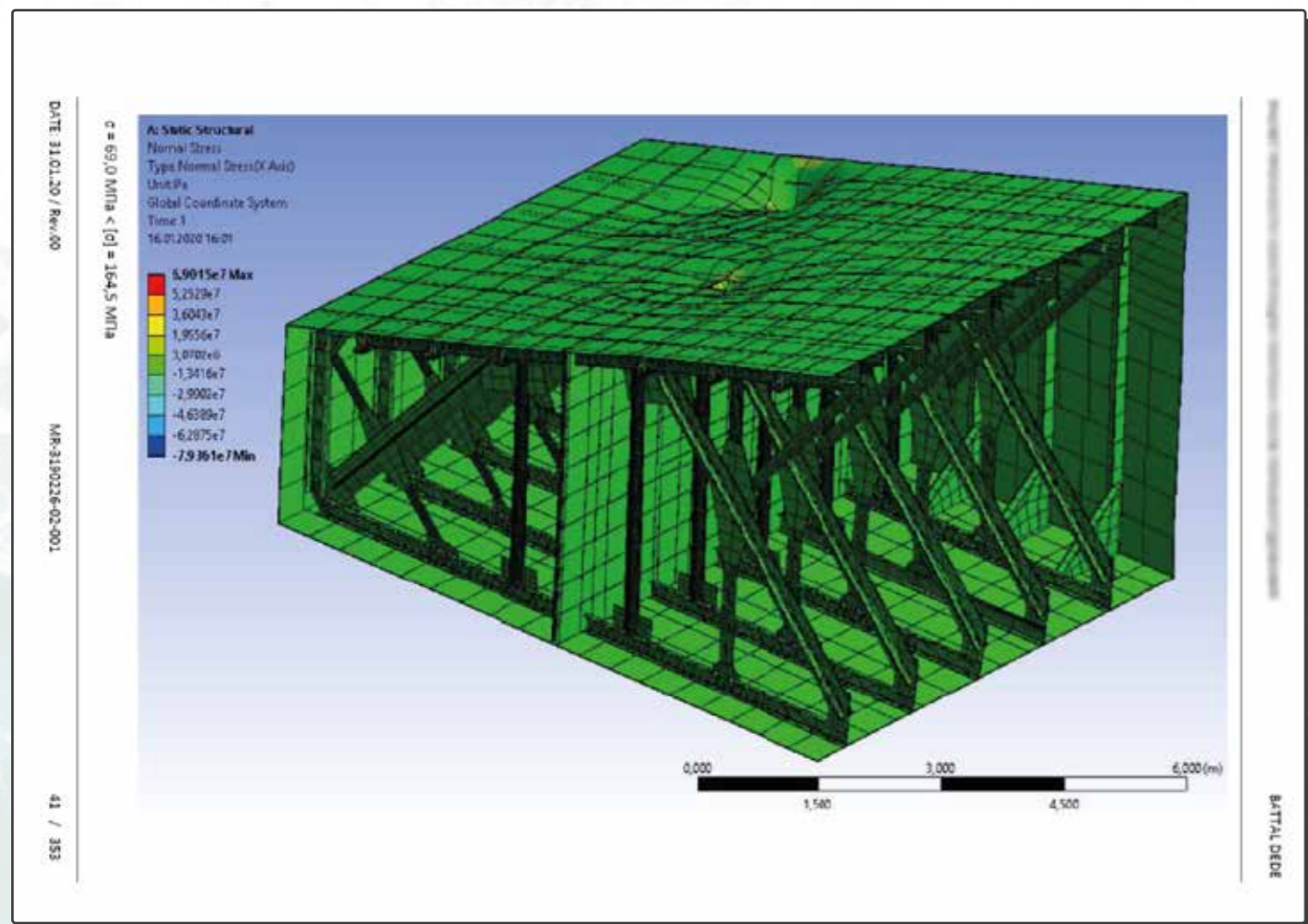
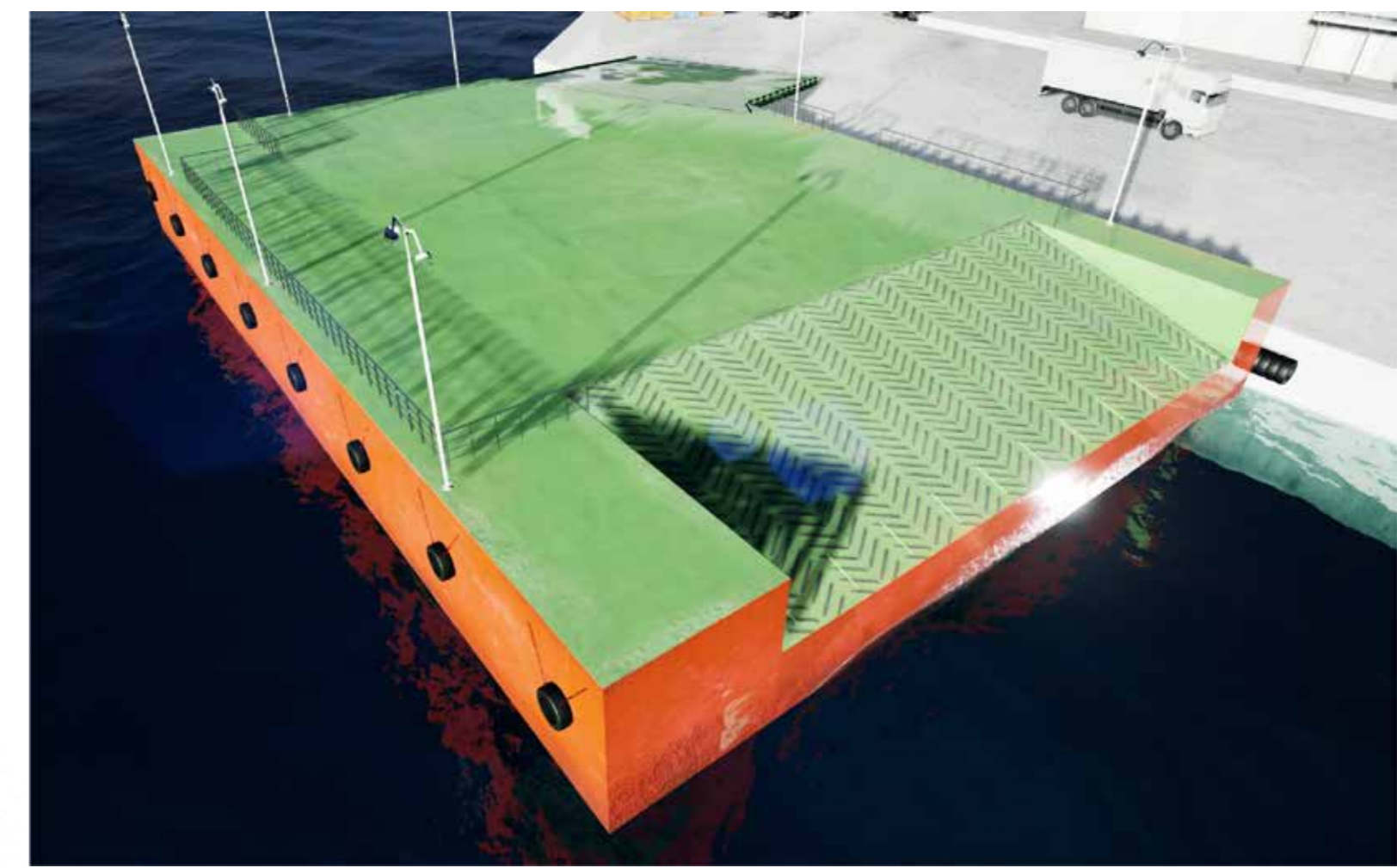
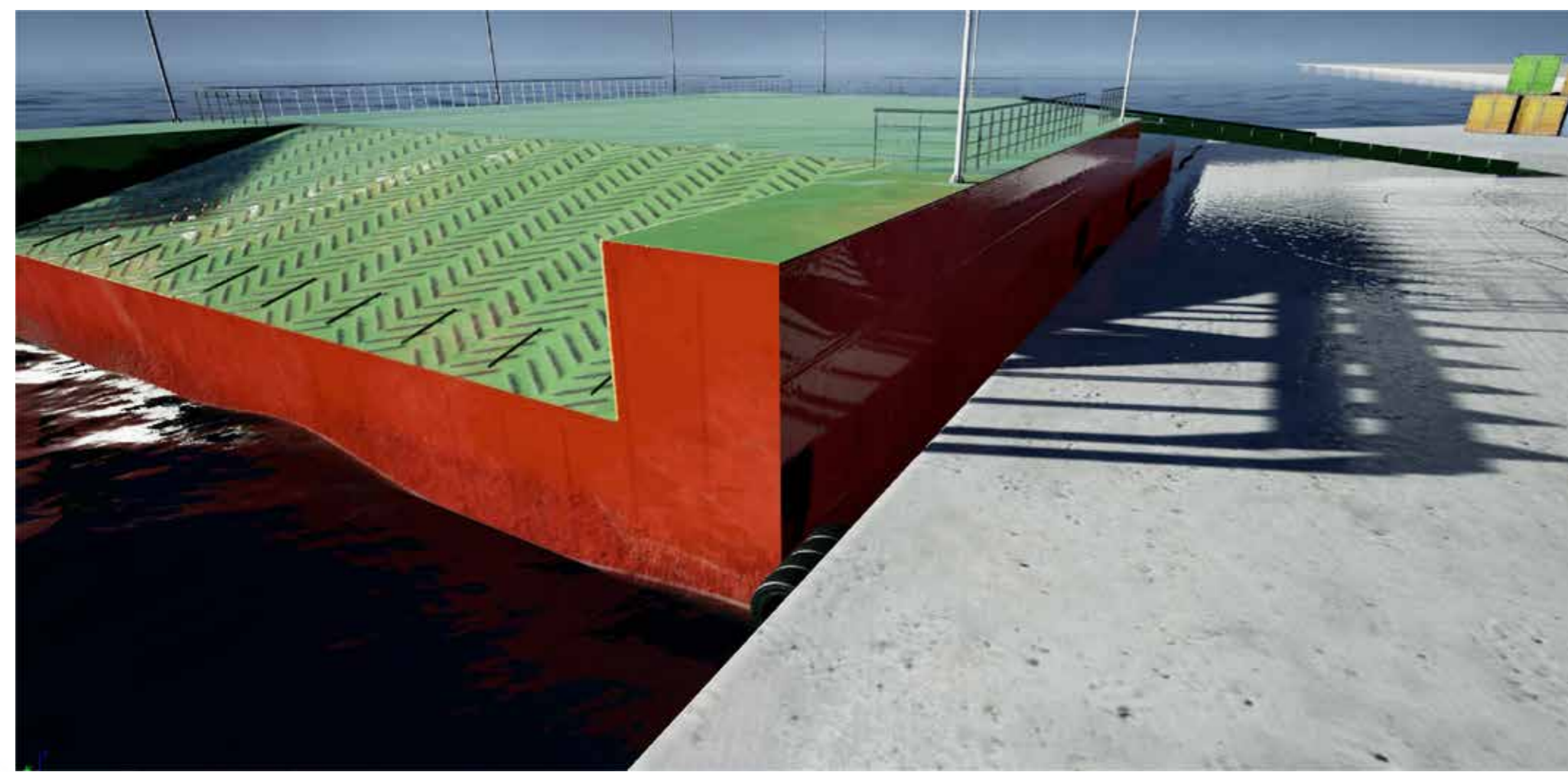


Structural design

- Concept and Basic Design 3D model (Rough and Production 3D Model)
- Scantling Calculations and Construction plans
- FEM Calculations
- Detail Design and production drawings (3D Production Drawings - Assembly drawings and 2D standard production drawings)
- Weight and COG estimation and control
- Profile and plate parts drawings
- Curved and Shell plates development
- Bending templates and jigs
- Plates and profiles nesting



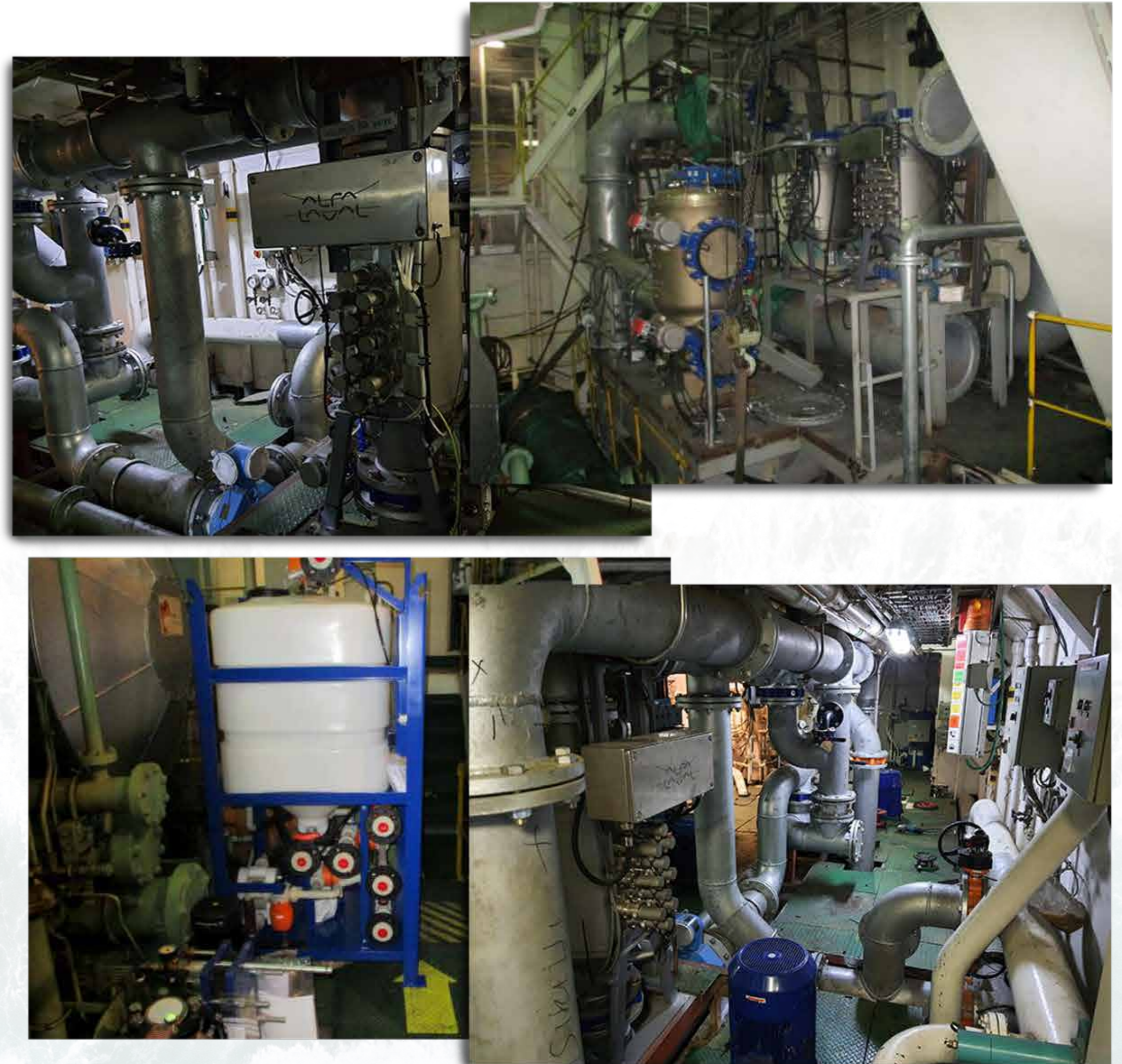
Structural design





Pipes and systems

- 3D Modeling of equipment
- System Diagrams
- 3D pipe routing
- Machinery spaces conceptual and detail arrangement
- Service spaces
- Combination drawings
- Pipes arrangement plans
- Connection and penetration drawings
- Cable traces
- HVAC
- Piping detail design and production drawings
- 3D Spools and ISO
- Pipe supports
- BOM and part lists



Pipes and systems

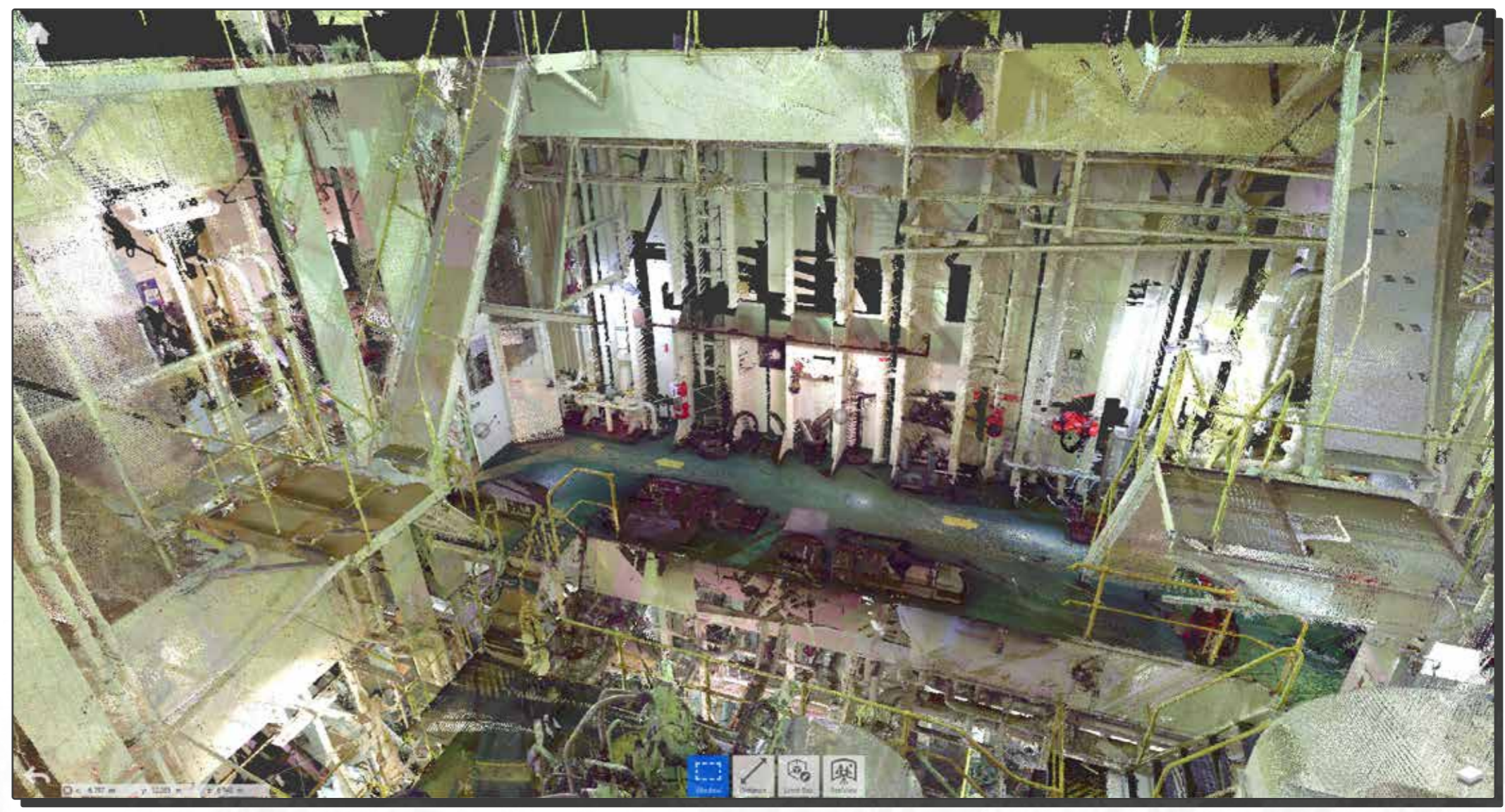
PIPELINE 03-L320

3D VIEW INSIDE E/R, PORT/CL,
LOOKING AFT/PORT

3D VIEW INSIDE E/R, PORT/CL,
LOOKING AFT/STBS

PIPELINE 03-L320 NEW PIPE LINE FROM UV REACTORS TO CIP MODULE

NAVALISTA LLC 13 Lermontovskiy lane, office 6, 65014, Odessa, Ukraine	SCALE -	DRAWING NO MR-3200040-09-012	SHEET 2 / 4
---	------------	---------------------------------	-------------



PIPELINE 03-L201-01

PIPE SPECIFICATION
DN300 DN2458/DIN1629 5137.0 508x11 GALV
DN450 DN2458/DIN1629 5137.0 457x10 GALV
DN350 DN2458/DIN1629 5137.0 356x8 GALV
DN150 DN2458/DIN1629 5137.0 168x7 GALV
DN125 DN2458/DIN1629 5137.0 146x7 GALV
DN85 DN2458/DIN1629 5137.0 76x5 GALV
DN75 DN2458/DIN1629 5137.0 71x3.2 GALV

CONNECTED EQUIPMENT
FILTER ACB-999-350
VALVE V212-31
VALVE V201-31
VALVE V201-9
VALVE V201-3
PRESSURE MONITORING DEVICE
SAMPLING DEVICE Q2011
BACKFLUSH PUMP P309-1

CONNECTED TO EXISTING PIPELINE (BLIND FLANGE REMOVAL)
EXISTING PIPELINE
VALVE V212-31

REV. NO. SHIP NO. 030-076
DATE 28.08.2028 APPROVED
DATE 28.08.2028 CHECKED
DATE 28.08.2028 DRAWN A. D'Inno

SHIP NAME SFERA
NAME OF DRAWING ISO VIEW OF NEW BWTS PIPELINE 03-L201-01
SCALE -
DRAWING NO MR-3200040-09-001
SHEET 1 / 1

PIPELINE 03-L201-01 NEW PIPE LINE FROM BALLAST PUMPS TO 03-L201-02

PIPELINE 03-L201-01

3D VIEW INSIDE E/R, STARBOARD,
LOOKING FWD/PORT

3D VIEW INSIDE E/R, STARBOARD,
LOOKING FWD/DOWN

PIPELINE 03-L201-01 NEW PIPE LINE FROM BALLAST PUMPS TO 03-L201-02

NAVALISTA LLC 13 Lermontovskiy lane, office 6, 65014, Odessa, Ukraine	SCALE -	DRAWING NO MR-3200040-09-001	SHEET 2 / 1
---	------------	---------------------------------	-------------

PIPELINE 03-L320

PIPE SPECIFICATION
DN32 DN2448/DIN1629 5137.0 42x4 GALV
CONNECTED EQUIPMENT
CIP MODULE
UV REACTOR MOD.1000

REV. NO. SHIP NO. 030-076
DATE 28.08.2028 APPROVED
DATE 28.08.2028 CHECKED
DATE 28.08.2028 DRAWN A. D'Inno

SHIP NAME SFERA
NAME OF DRAWING VIEW OF NEW BWTS PIPELINE 03-L320
SCALE -
DRAWING NO MR-3200040-09-012
SHEET 1 / 4

PIPELINE 03-L320 NEW PIPE LINE FROM CIP MODULE TO UV REACTOR

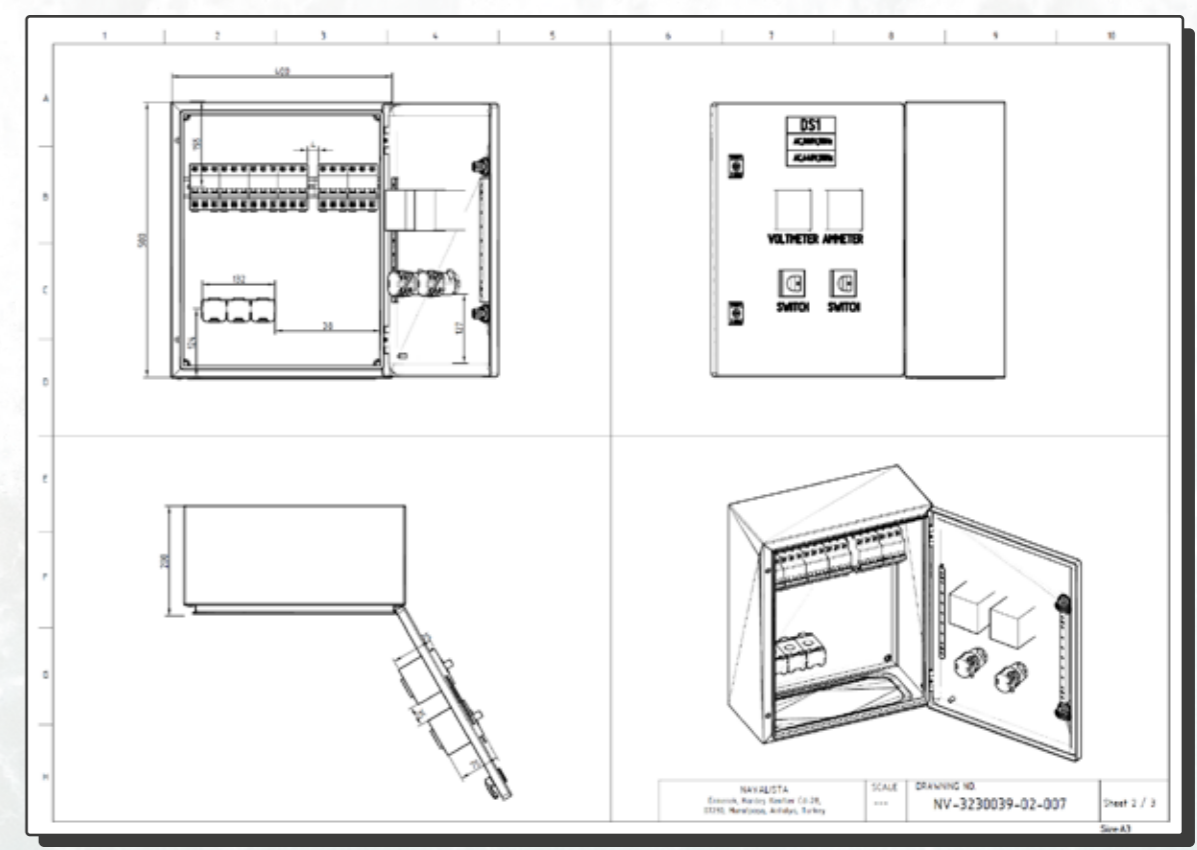
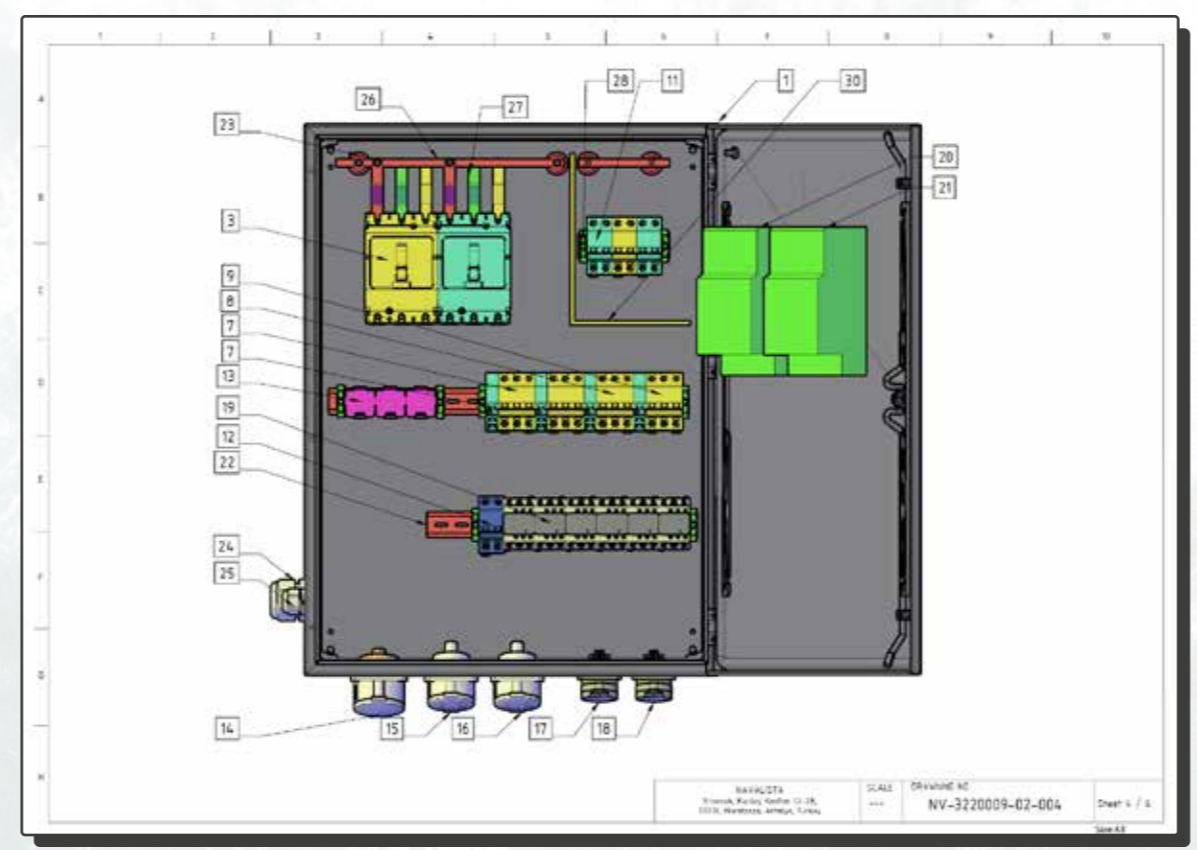
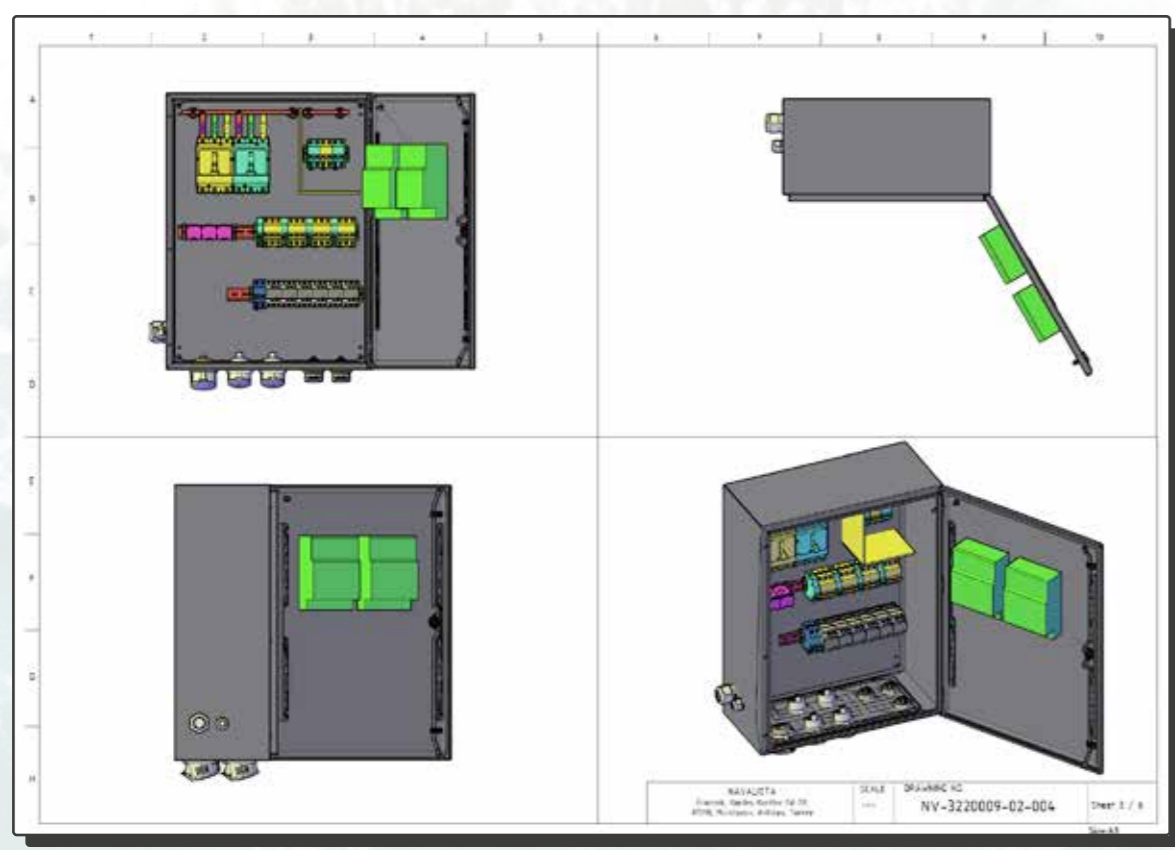
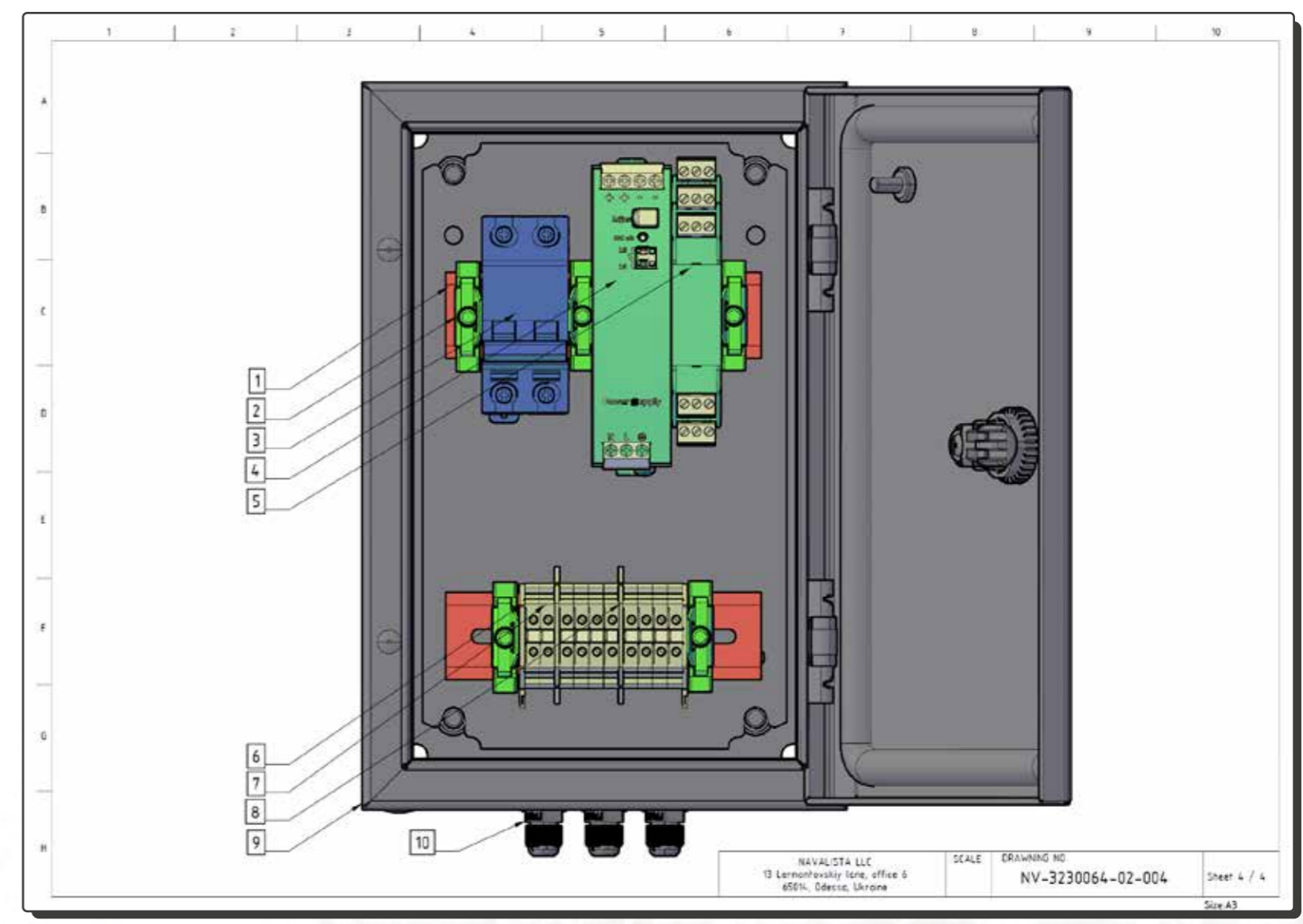
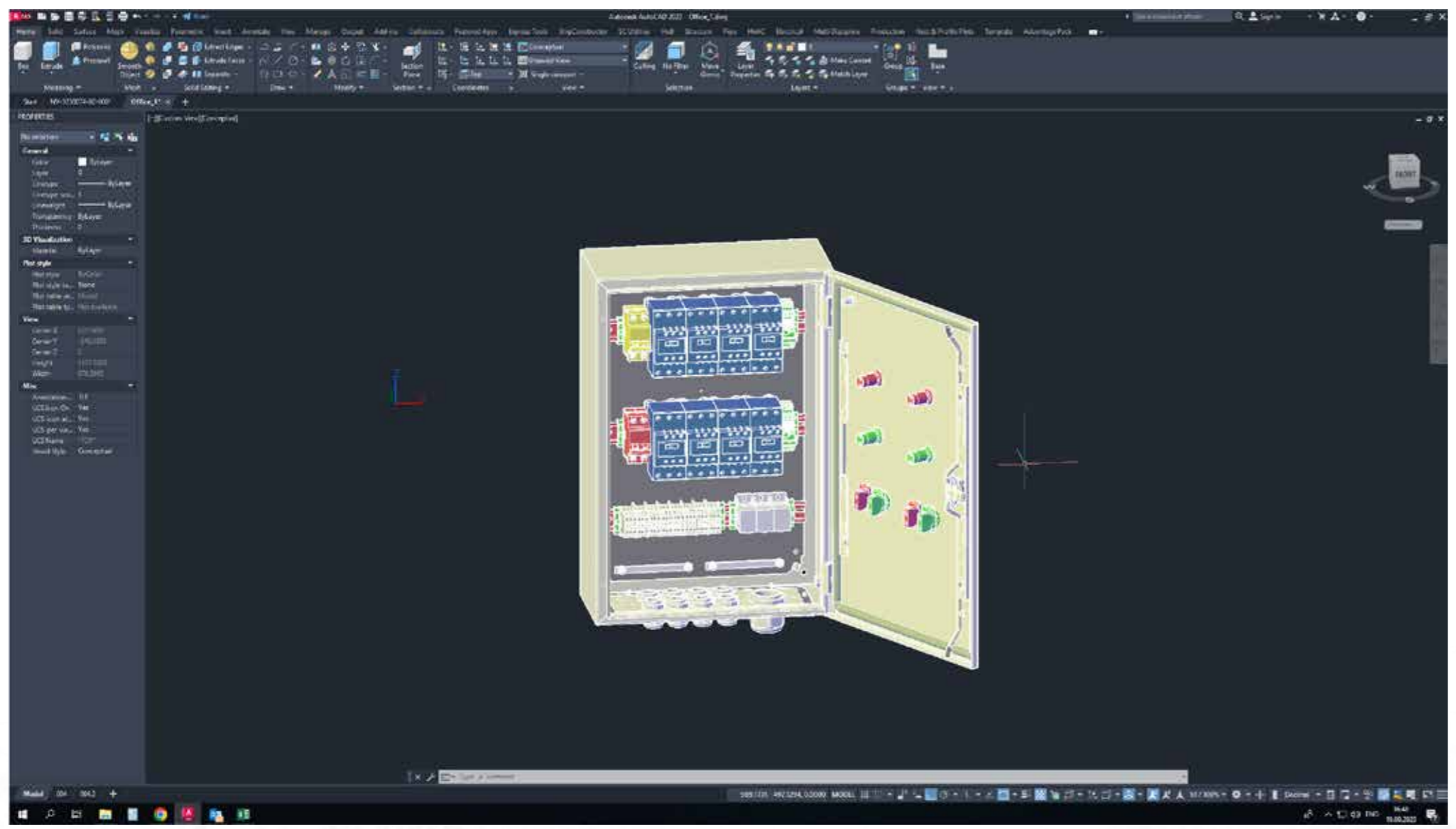


Electrical engineering

- Electric load balance
- AC/DC and Power factor
- Short circuit calculation
- Cable traces routing
- Arrangement drawings
- BOM and part lists



Electrical engineering



List of Software used by NAVALISTA and our CAD/CAM Skill matrix

NAVALISTA Detail Design Group has all disciplines available in-house:

- Structural design /// 20 pers.
- Mechanical design (Piping, HVAC) /// 24 pers.
- Electrical /// 3 pers.
- Equipment parts and machinery design /// 18 pers.

Our engineers have more than 10 years experience of work in the following design areas:

- Rhino3D /// 6 pers.
- SOLIDWORKS /// 3 pers.
- ExpressMarine /// 2 pers.
- ShipConstructor (Structure) /// 24 pers.
- ShipConstructor (Distributed Systems) /// 22pers.
- Cadmatic Hull /// 5 pers.
- Cadmatic Outfitting /// 11 pers.
- Nestix /// 2 pers.
- Autodesk ReCap /// 4 pers.
- Autodesk Navisworks /// 15 pers.
- Calculations






- FEM (ANSYS) 3 pers.
- STRENGTH 4 pers.
- STABILITY 5 pers.
- TOWAGE 3 pers.
- TONNAGE 3 pers.
- FREEBOARD 2 pers.
- OPERATIONAL BOOKLETS 5 pers.
- ELECTRICAL 2 pers.
- HEAVY LIFT OVERSIZE CARGO 6 pers.








Thank you for your attention!

Head Office:

-  office@navalista.com
-  0 800 750 780 (Ukraine only)
-  +38048 770 1970
-  +38048 770 5970
-  13 Lermontovskiy lane, office 6, 65014,
Odessa, Ukraine

Bulgaria Office:

-  office@navalista.com
-  +359 87 723 75 46
-  132 Mimi Balkanska str.,1540, Sofia,
Bulgaria

